

Case study: Graphisoft – Integrated software for architecture and the building industry

ARCHITECTURE AND DESIGN

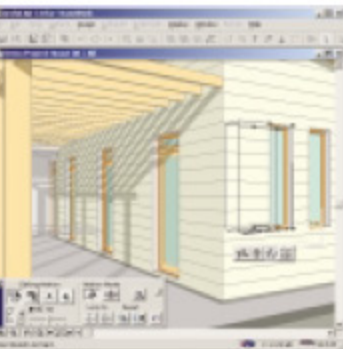
A leading provider of building design and management software solutions for the architectural profession and the building industry, Graphisoft is ranked today among the largest Engineering CAD software companies in the world, with 13 offices worldwide in addition to its headquarters. Since its founding in 1982, Graphisoft has revolutionized architectural visualization and communications with its Virtual Building™ concept, introducing many innovations that are now considered essential to CAD, including object-based 3D modeling, building simulation and collaborative architecture. Graphisoft's products are sold in 80 countries and in 25 different languages and are used by nearly 100,000 architects and building professionals worldwide. More information about Graphisoft is available at <http://www.graphisoft.com>.

There are three Graphisoft products protected with WIBU-KEY:

ArchiCAD (Integrated 2D/3D CAD system for architects)

With integrated and object-oriented 3D CAD becoming the mainstream design and documentation tool for architectural practices, traditional 2D drafting-based systems are being phased out in favor of 3D model-based solutions that allow architects and designers to create rather than draw, build rather than draft.

Graphisoft has been developing design solutions around the building simulation philosophy for almost two decades. Hundreds of thousands of buildings



have already been designed, specified and constructed based on Graphisoft's tested and proven Virtual Building concept. This leading-edge intelligent object offers automatic documentation, instant visualization and the ultimate interoperability. The authoring tool for the Virtual Building, Graphisoft's ArchiCAD is simply the easiest way for architects and designers to embrace the new CAD standards.

ArchiFM2000 (Computer Aided Facility Management system)

The costs of designing and building structures pale by comparison to the costs of operating a building or other structure over the 10, 20, 30 or more years of its lifespan. An integrated 3D building model enables a building owner to make important decisions about lifecycle costs upfront, thereby significantly affecting and improving design decisions.

The rich set of building data that is created during the design and documentation

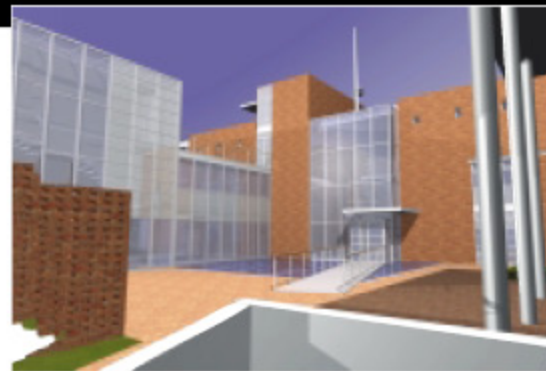
phase of the building remains relevant even after the building is constructed. Architects, interior designers and engineers, as well as contractors, marketing and sales personnel, and building managers and owners can add and extract information to and from the 3D database for the building's renovation, maintenance and operation, and even demolition.

Graphisoft expanded the application of the Virtual Building model by offering a fully integrated CARM (Computer-Aided Facility Management) package. Graphisoft ArchiFM2000 adds a key piece to our ability to serve customers from the initial design through the management and operation phase of a building's life-cycle.

CYMAP (HVAC and electrical design software)

Integrating HVAC (Heating, Ventilation and Air Conditioning) and electrical services with the Virtual Building model is an important step in creating a comprehensive design/build solution for architectural projects.

Graphisoft's CYMAP offers comprehensive capabilities spanning both HVAC and electrical design. CYMAP is easy to learn and is appropriate for small- and large-scale projects. This integrated system can operate as a stand-alone application or alongside ArchiCAD and other CAD systems.



Why Graphisoft chose WIBU-KEY

There are several reasons why Graphisoft has chosen WIBU-KEY. Here are the most important ones:

WIBU-KEY is an incomparable uniform solution

Being a multiplatform company (Graphisoft develops for Windows and Macintosh computers) a uniform solution was essential for Graphisoft. Thanks to its well thought out solid concept, WIBU-KEY is the only hardware key based protection system which supports both Windows and Macintosh platforms and has the same API irrespectively of platform, hardware interface and working method (i.e. standalone or network). In brief, from a technical point of view, the WIBU-KEY solution is by far the best among the hardware key systems with regard to features, security and flexibility.

WIBU-KEY supports mixed networks

Regardless of the WIBU-KEY server machine type, the clients can access the network key from both Windows-based and Macintosh computers, which is a very common and required practice in many architectural offices.

WIBU-KEY supports MacOS X from the very beginning

The new Macintosh operating system offers some clear benefits for CAD users, so getting support even in its early stage (even during the Beta period) was important for Graphisoft.

WIBU-SYSTEMS provides unique end-user support

In addition to its efficient end-user support tools containing diagnosis, test and customizing features, WIBU-SYSTEMS offers direct end-user support for its customer's users, which is unequaled among the hardware key vendors. This is only possible because of their high degree of confidence with their technology, and their low incidence of field failure.

WIBU-SYSTEMS offers effective and fast technical support

WIBU-SYSTEMS has extremely responsive and helpful technical support for its customers. This is a guarantee for fast and effective actions in case of difficulties.



Impressum

KEYnote 2nd Edition October 2001

Publiher
WIBU-SYSTEMS AG
Ruppener Strasse 53-54 • D-76137 Karlsruhe
Phone: +49-721-93172-0 • Fax: +49-721-93172-22
Mail: info@wibu.com • www.wibu.com

Responsible for the content
Marcelus Buchheit, Oliver Witzenscheid

Editors:
Roger Anton, Marcelus Buchheit, Ronald Friedewich,
Ralf Fuc, Barnett Griffin, Ole Harald Hanks, Gaber
Konecni, Ulrike Lindner, Alexander Schmitt, Stephan
Stätz, Oliver Witzenscheid.

Letters are welcome at any time. They are protected by the secret of the editorial staff. Articles identified by name don't absolutely reflect the opinion of the editors.